



Pulling it all together

Western Climate Policy Forum

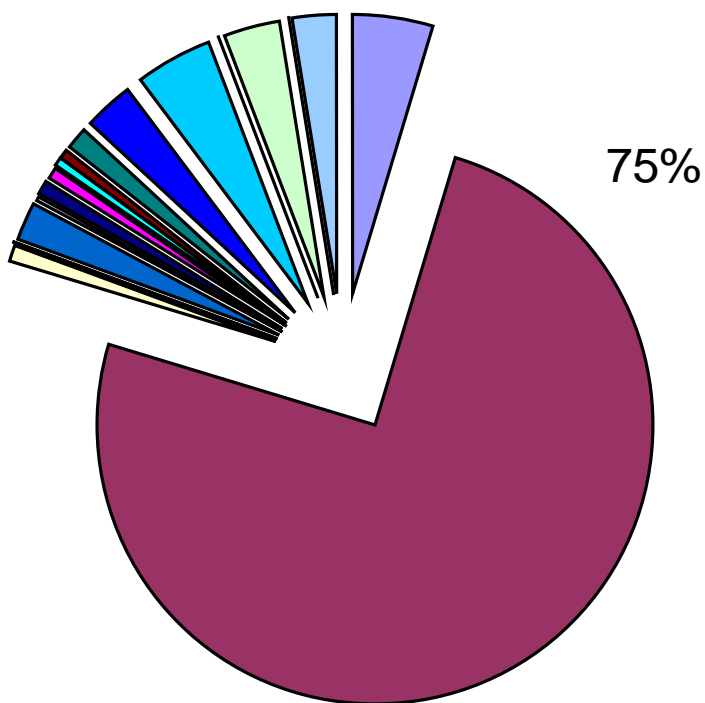
Gregg Wagner, Director Sustainability & Environment
Rio Tinto Minerals



- How we got here
 - Measuring & public reporting of energy & GHG since 1990
 - First mining company to join California Climate Action Registry
 - Verified emissions back to 2000
 - Established Energy/GHG reduction targets



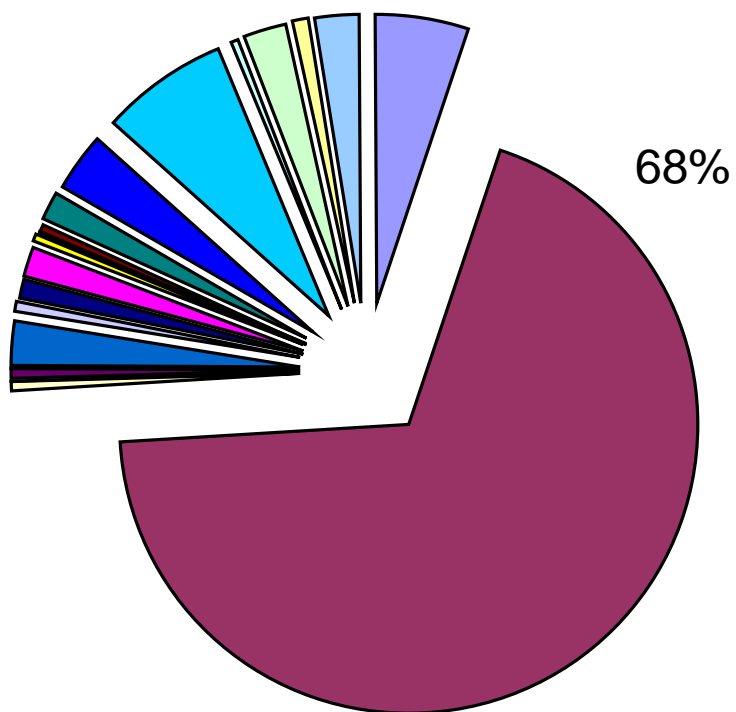
Energy (MJ)



- Argentina
- Boron
- Coudekerque
- Owens Lake
- Rotterdam
- Espana
- Wilmington
- Boñar / Respina
- Gent
- Houston Plant
- Japan
- Ludlow / Argonaut
- Malaga / Tres Amigos
- Malanaggio / Rodoretto and Crosetto
- Oberfeistritz / Rabenwald
- Ontario Operations
- Montana Operations
- Sierra Mexico
- Talc de Luzenac/Trimouns
- Three Springs
- Weißkirchen/Kleinfestritz



GHG (tCO2)

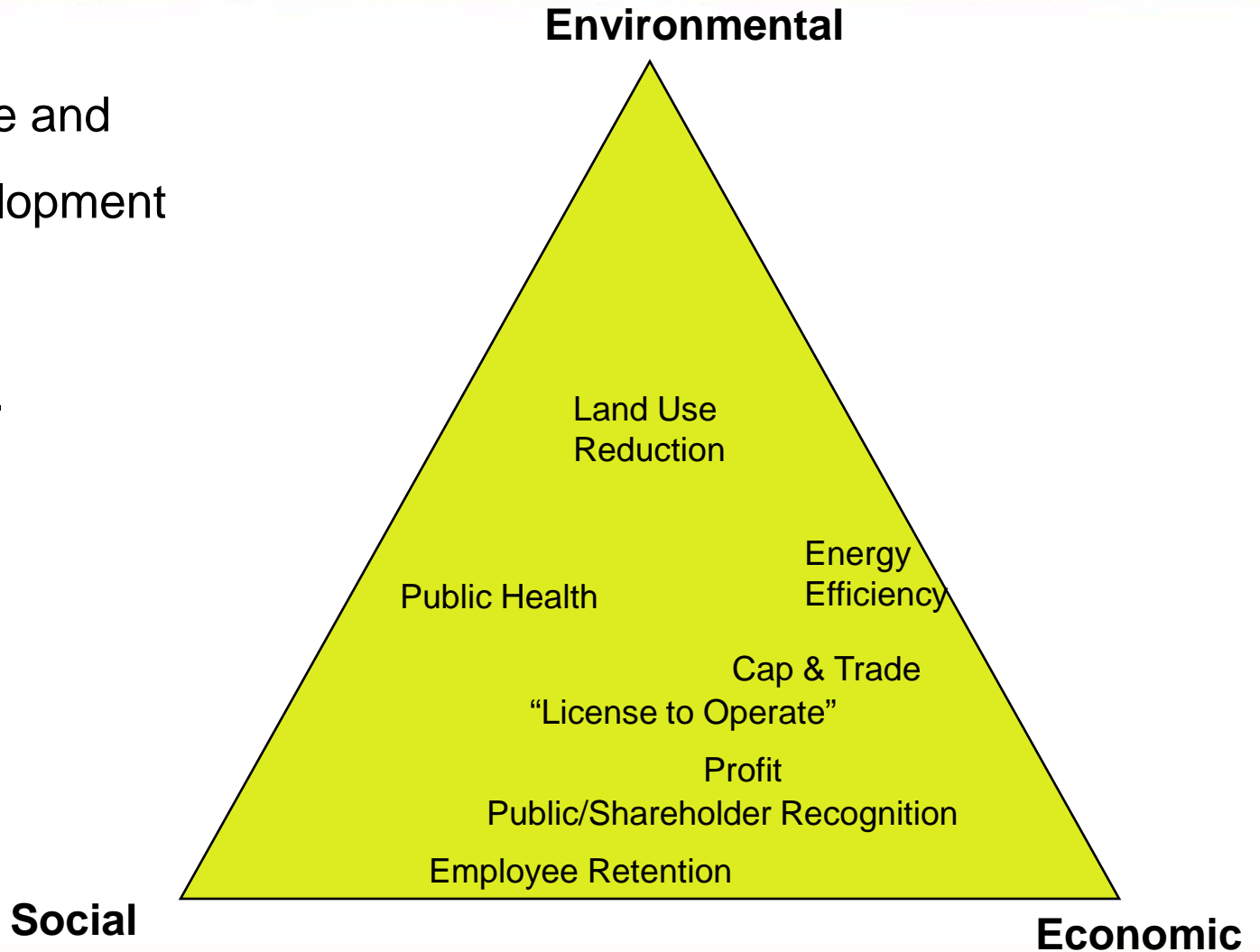


- Argentina
- Boron
- Coudekerque
- Owens Lake
- Rotterdam
- Espana
- Wilmington
- Boñar / Respina
- Gent
- Houston Plant
- Japan
- Ludlow / Argonaut
- Malaga / Tres Amigos
- Malanaggio / Rodoretto and Crosetto
- Oberfeistritz / Rabenwald
- Ontario Operations
- Montana Operations
- Sierra Mexico
- Talc de Luzenac/Trimouns
- Three Springs
- Weißkirchen/Kleinfestritz



Climate Change and
Sustainable Development

GHG Reduction





- Lessons learned
 - Get in the game as soon as possible
 - Have clear plans & goals/targets
 - Meter/measure/monitor
 - Empower everyone to gather/provide energy efficiency ideas



- Keys to success:
 - Sustainable Development & Organizational Effectiveness programs at RTM
 - Energy Efficiency Reviews at Operations
 - Energy Management Teams at Operations
 - Including cost of carbon in project evaluations
 - Personal accountability for energy/GHG targets
 - Life Cycle Assessments of products



- Challenges
 - Potential overlapping programs
 - Energy-intensive industry effects
 - Leakage
 - Next energy/GHG reduction targets



AB 32

WCI

Cap & Trade

Renewable
Portfolio Std

CCAR

TCR

Carbon Tax

USCAP

ICAP

USEPA GHG
ANPR

